



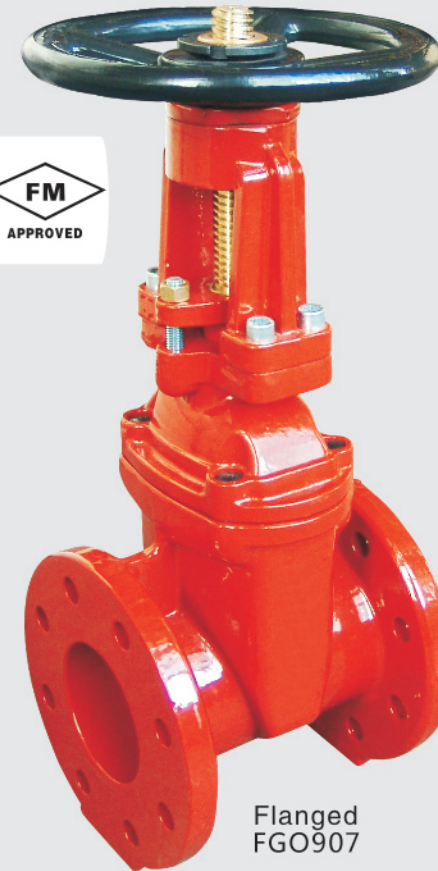
AWWA C509 250PSI/300PSI

FGO907 Rising Stem Flanged Joint Ends Resilient Wedge Gate Valves

MATERIAL LIST

PART	SPECIFICATION
1 Valve Body	Ductile Iron ASTM A 536
2 Resilient Wedge	Ductile Iron ASTM A 536/EPDM ASTM D 2000
3 Wedge Nut	Bronze ASTM B 584 UNS C83600
4 Dowel Pin	Stainless Steel ASTM A 276 UNS S42000
5 Stem Back Seat O-Ring	EPDM ASTM D 2000
6 Bonnet Gasket	EPDM ASTM D 2000
7 Bonnet	Ductile Iron ASTM A 536
8 Stem Packing	EPDM ASTM D 2000
9 Threaded Rod	Carbon Steel Zinc Plated
10 Gland Bushing	ASTM B 584 Bronze ASTM B 584
11 Gland	ASTM A 126-B Cast Iron ASTM A 126-B
12 Gland Nut	18-8 Stainless Steel 18-8
13 Yoke Screw	Alloy Steel ASTM A 574M Zinc Plated
14 Yoke	Cast Iron ASTM A 126-B
15 Yoke Bushing	Bronze ASTM B 584
16 Flat Point Set Screw	Alloy Steel ASTM F 912M Black Oxide
17 Yoke Bushing Retainer	Cast Iron ASTM A 126-B
18 Handwheel	Ductile Iron ASTM A 536
19 Handwheel Nut	Carbon Steel Zinc Plated
20 Flat Head Screw	Carbon Steel Zinc Plated
21 Stem	Bronze ASTM B 150 UNS C61400
22 Bonnet Screw	Alloy Steel ASTM A 574M Zinc Plated
23 NPT Pipe Plug	Malleable Iron ANSI B16.3 (Epoxy Coated)

- ◆ Fire Protection Valve • Outside Screw and Yoke • Resilient Wedge • Epoxy Coated Interior/Exterior • Pre-Grooved Stem for Supervisory Switch • Drilled, Tapped and Plugged at Boss Location A**
- ◆ 250 PSI/300PSI/17.2 Bar Non-Shock Cold Working Pressure(160° F/71°C max. operating temperature)
- ◆ CONFORMS TO AWWA C509 Electrostatically applied fusion-bonded epoxy coated inside and outside per AWWA C-550.



Flanged FGO907

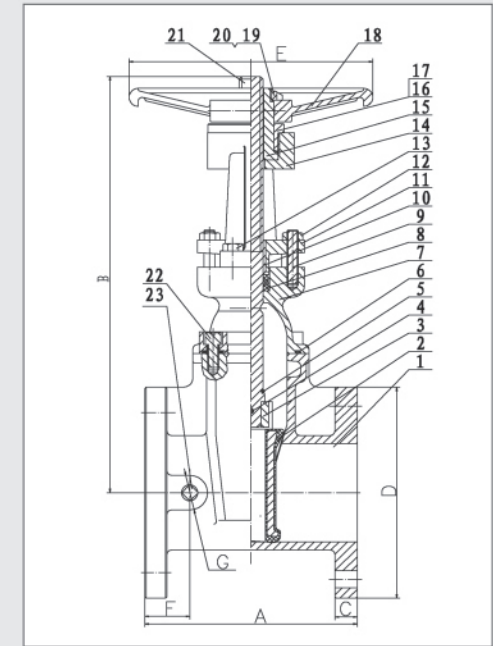


Fig x Fig

FREEZING WEATHER PRECAUTION: Subsequent to testing a piping system, gate valve should be in an open position to allow complete drainage.

DIMENSION-WEIGHTS-QUANTITIES

Size	Dimension																Bolt Circle	Flange Holes	Turns To Open	Weight			
	A	B Open	B Closed	C	D	E	F	G	In	mm	In	mm	In	mm	Lbs	Kg							
2½	65	7.5	190	17.8	453	14.9	378	0.69	17.5	7.0	178	7.9	200	1.50	38	1.6	40	5.50	140	4	8.8	45	20
3	80	8.0	203	19.7	500	15.9	405	0.75	19.0	7.5	191	7.9	200	1.73	44	2.1	54	6.00	152	4	10.5	53	24
4	100	9.00	229	21.0	534	16.6	422	0.94	24.0	9.0	229	10.2	260	2.13	54	2.1	54	7.50	191	8	10.4	94	43
6	150	10.5	267	29.3	744	22.9	581	1.00	25.4	11.0	279	12.4	315	2.24	57	2.5	64	9.50	241	8	15.7	154	70
8	200	11.5	292	37.0	939	28.5	724	1.13	28.6	13.5	343	14.8	375	2.48	63	2.8	70	11.75	298	8	17.2	247	112
10	250	13.0	330	44.8	1139	34.5	877	1.19	30.2	16.0	406	16.4	416	2.56	65	2.8	70	14.25	362	12	21.4	349	159
12	300	14.0	356	52.2	1326	39.9	1014	1.25	31.8	19.0	483	17.5	445	2.91	74	3.4	86	17.00	432	12	25.5	484	220