



## Products:

- Remote Serial Interface - FGVX-RSI ( Message Expander)
- Back Up Amplifier Card - FGVX-BA

## Remote Serial Interface:

### Features:

- Allows use of any N.O. contact to control voice messaging system
- Connects to FGVAX25/50/100 via plug-in connector.
- Needs no external power supply.
- Controls message, tones and sequence of operation.
- Allows integration of voice messaging system with ancillary equipment
- Automatic addressing, no DIP switches to set.
- Terminal Block provided for connection or field wires.

The Model Number FGV-RSI is designed to facilitate access to the RS-232 input capabilities of the FGVAX25/50/100 Series. Simple contact closures, provided by an auxiliary control, can select one of many custom messages and/or tones available in the voice messaging system.

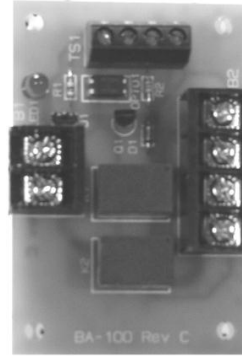
This additional control interface will allow the FGVAX 25/50/100 series to operate as a multi-message, complex sequence voice messaging system. Multiple messages and alternate tones can be easily accessed, and special operational sequences can be controlled through the FGV-RSI.

The FGV-RSI mounts in the voice messaging system backbox, and connects to the FGVAX 25/50/100 series using a simple plug-in connector. Each FGV-RSI has 8 inputs for the connection of auxiliary normally-open contacts. Multiple FGV-RSI units may be connected to provide up to 64 separate control points\*.

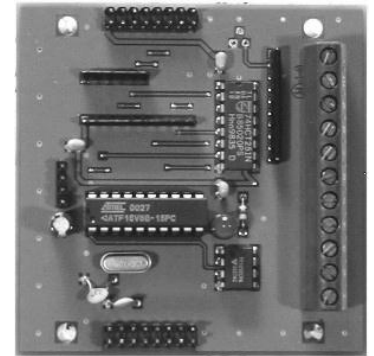
\*Number of messages, sequence of operations and number of control points are all affected by the size of the program required. Always consult with the factory with your specific needs.

**NOTE:** The Model Number FGVX-RSI (Remote Serial Interface) is *not* UL Listed for Fire Alarm applications. This product must only be used for non-Fire Alarm Non Life Safety (Industrial Signaling) applications.  
Fire Signal must override auxiliary messages.

## System Accessories



FGVX-BA100  
Backup Amplifier  
Switching Card



FGVX-RSI  
Remote Serial  
Interface

### Operation:

Customer provided normally open contacts will cause an individual message or tone to sound.

Message/tones are prioritized by position. Contact 1 on RSI 1 will have highest priority. Contact 8 on the last RSI will be the lowest priority. As long as the contact remains closed, the associated message will sound. If a higher priority message is selected while another is playing, the first will finish its cycle and then the second message will sound.

Momentary contacts will generate a single cycle of the selected message/tone.

An "Active" LED is provided on the FGVX-RSI which will illuminate whenever any of the associated switches close.

Up to 8 FGVX-RSI modules may be connected to an FGVAX 25, FGVAX 50 or FGVAX 100 Series module.

## Ordering Information:

Description	Model Number
Remote Serial Interface - Controls up to 64 Messages via serial data interface with host equipment panel.	FGVX-RSI
Backup Amplifier Switching Card - Monitors the primary amp and switches to standby amp upon failure.	FGVX-BA100



# FGVX-BA

Backup Amplifier  
Switching Card

### Features:

- Automatically monitors primary amplifier and switches to backup amplifier upon failure.
- Supervised through FACP
- One amplifier may backup several primary amplifiers
- Allows for fully redundant voice evacuation systems.

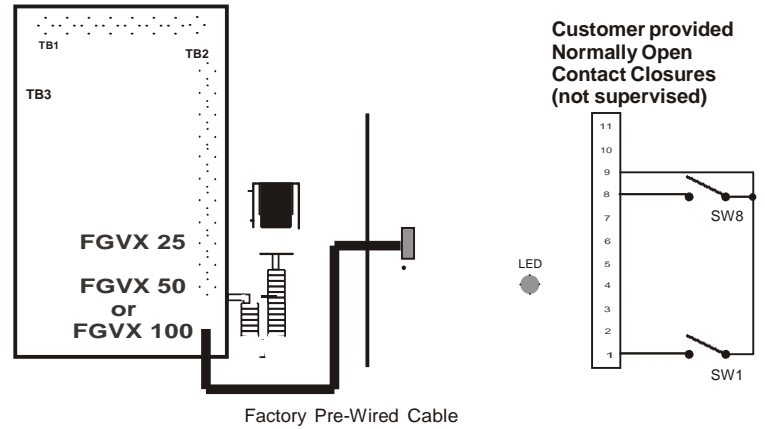
The FGVX-BA allows the system designer to incorporate backup audio amplifiers in their design. The FGVX-BA continually monitors the primary amplifier, and in the unlikely event that an

service.

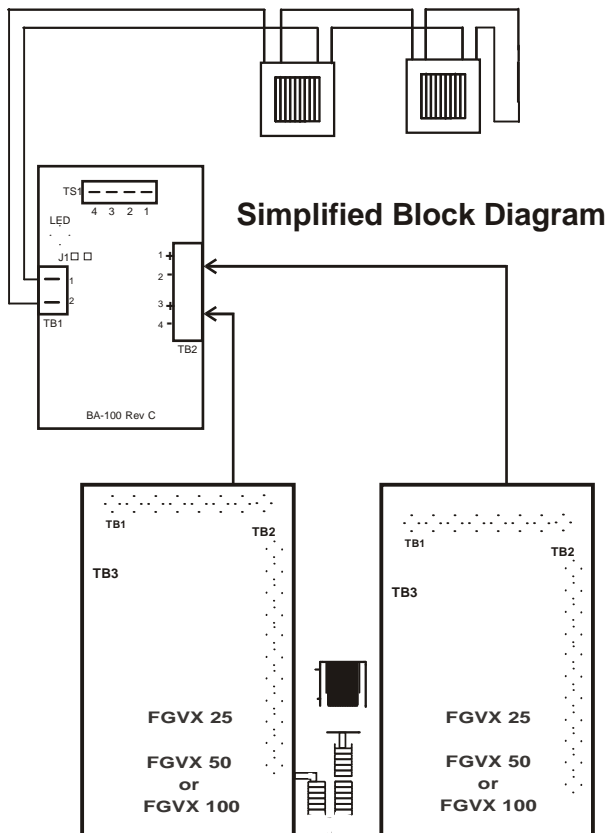
The FGVX-BA can be applied to provide one backup amplifier for each primary amplifier, or to provide one backup amplifier to serve as backup for any number of primary amplifiers.

When a fully redundant voice evacuation system is required, the backup amplifier will be configured to include its own microphone and digital message repeater.

### Typical Application of the FGVX-RSI



### Typical Application of the FGVX-BA



**NOTE:** The Model Number FGVX-RSI (Remote Serial Interface) is not UL Listed for Fire Alarm applications. This product can only be used for non-Fire Alarm Non Life Safety (Industrial Signaling) applications.

### Technical Characteristics:

Model	Input Voltage	Standby	Active
FGVX-BA100	24 VDC	0.04 A	0.01 A
FGVX-RSI	24 VDC	0.005 A	0.01 A

*Specifications are subject to change without notice. Specifications are provided for information only and no responsibility is assumed by Fireguard Safety Equipment Co Ltd For their use.*