

FG-S01_AP / FG-S02_AP / FG-S03_AP SMOKE DETECTORS



PRODUCT OVERVIEW

This alarm is a smoke detector of the photo cell principle. This means that the alarm checks the air for smoke resulting from fire. It does not detect heat, gas or fire. If the smoke detector is properly mounted and maintained it will sound an alarm in an early stage. In the event of a fire this can give you those extra seconds needed to vacate your home and call the fire brigade. The alarm is designed to detect smoke. It cannot prevent a fire. Read the instructions through carefully before using the smoke detector.

IMPORTANT

Placing a smoke alarm is a part of your fire protection, just as fire extinguishers, emergency ladders, ropes, but also your choice in the use of building materials for renovation. Always ensure that there is an evacuation plan, discuss this with your children. Ensure that each room can be left without opening the door, e.g. by the window. If there is any question as to the cause of an alarm, it should be assumed that the alarm is due to an actual fire and the dwelling evacuated immediately.



FG-S01



FG-S02



FG-S03

Features

- Photoelectric sensing technology
- Easy installation and maintenance
- Battery case at the back of a sensor for easy removal of a battery
- Sleek low-profile housing design
- Low battery warning
- Test button verifies battery and alarm operation
- Sounding a loud alarm signal or exceeding 85db in alarm mode

Technical Specification

Smoke Sensitivity :	0.086 dB/m to 0.14 dB/m
Power Supply :	9V Carbon Zinc/Alkaline Lithium Battery
Battery Life :	>12 months
Low Battery Life :	>30 days
Alarm Indicator :	Continuously emitting red light and alarm sound
Alarm Sound Level :	>85dB at 10 feet (3m)
Temperature :	0°C - 50°C
Humidity :	10%-90%RH, no condensation or icing
Dimensions (LxWxH) :	FG-S01/FG-S02: ø107x35mm FG-S03: ø130x40mm

MODEL	DESCRIPTION
FG-S01_AP / FG-S02_AP / FG-S03_AP	Smoke Detectors

BATTERIES /REPLACEMENT

The smoke detector works on one 9V battery. Normally the battery will last for at least one year under normal conditions of use. If the battery is empty or almost empty the smoke detector will indicate this with an audible "beep". This indicator sounds continually with intervals of 30-40 seconds for at least 7 days. Replace the battery when this indicator is given. Please use 9V batteries with high quality (Available from most department stores, DIY shops, electronic supply shops) .Placing the battery is very simple: remove the mounting bracket on the backside and connect the battery.



NOTE:

For battery replacement , use Eveready #522, #1222, #216; Duracell #MN1604; or Gold Peak #1604P, #1604S.

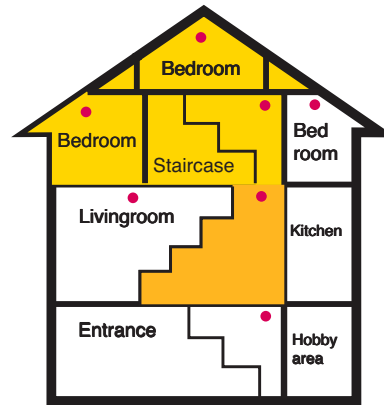
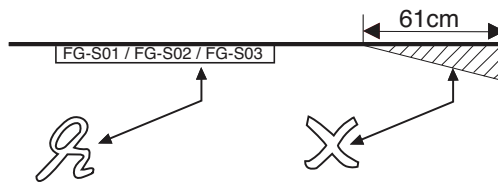
MOUNTING

Where is the best place to place the smoke detectors?

- * at least 1 in each room
- * one on each floor
- * in the hallway, in the stairway,
- * in front of each bedroom door
- * in each bedroom (if you sleep with the door shut)
- * in the living room
- * in the storage room or spaces with electric equipment

The alarm may not be mounted in:

- * a room in which the temperature can reach below 4°C and above 40°C
- * in damp spaces
- * just in front of doors or windows and not near a ventilator or radiator.
- * Do not mount the alarm in a place which is difficult to reach because of the test button, replaceable battery and maintenance. The alarm can be mounted easily. Fix the base plate using the screws supplied onto the area you have chosen. Pay attention to the following instructions and drawings. Gently tighten the alarm onto the base plate. Mount the alarm in the centre of the ceiling of the room.



Recommended placing for the Smoke Alarm:
1 smoke detector on each floor.

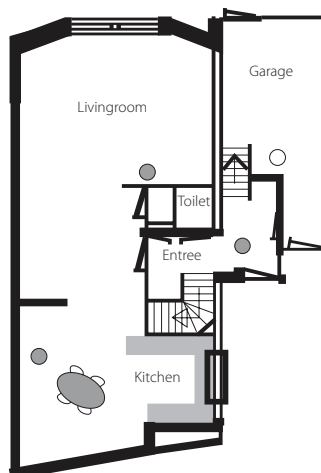
USE

The alarm is provided with a test button. Press this until the alarm signal sounds. The signal stops once the button is released. Test the alarm at least once per week, and certainly after replacing the battery or after cleaning, with a vacuum cleaner for example. The alarm must be vacuumed regularly to remove dust particles and to protect it as well as possible. The casing may not be opened during cleaning. If the alarm fails to operate correctly, please contact with dealer or manufacturer.

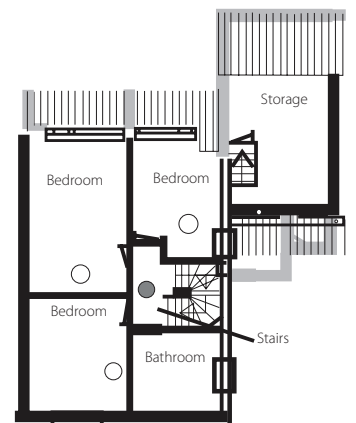


NOTE

- * The smoke detector may not be painted
- * Fireguard can never be made liable for loss and/or damage of whatever nature, including incidental and/or didn't use it according to the instruction and/or consequential loss, arising from the fact that the signal from the smoke alarm did not sound during smoke or fire.



● Smoke Detector for minimal protection



○ Smoke Detector for extra protection

FIREGUARD GLOBAL LTD.

Tel: 00-44-8450751042

Fax: 00-44-8459751043

Email: Info@Fireguard-Uk.com

www.fireguard-Uk.com



Unit 11 · Chancel Industrial Estate · Newhall Street
Willenhall · WV13 1NX · United Kingdom



FS546607



Fire Guard / FG- EVAC-VAPI