



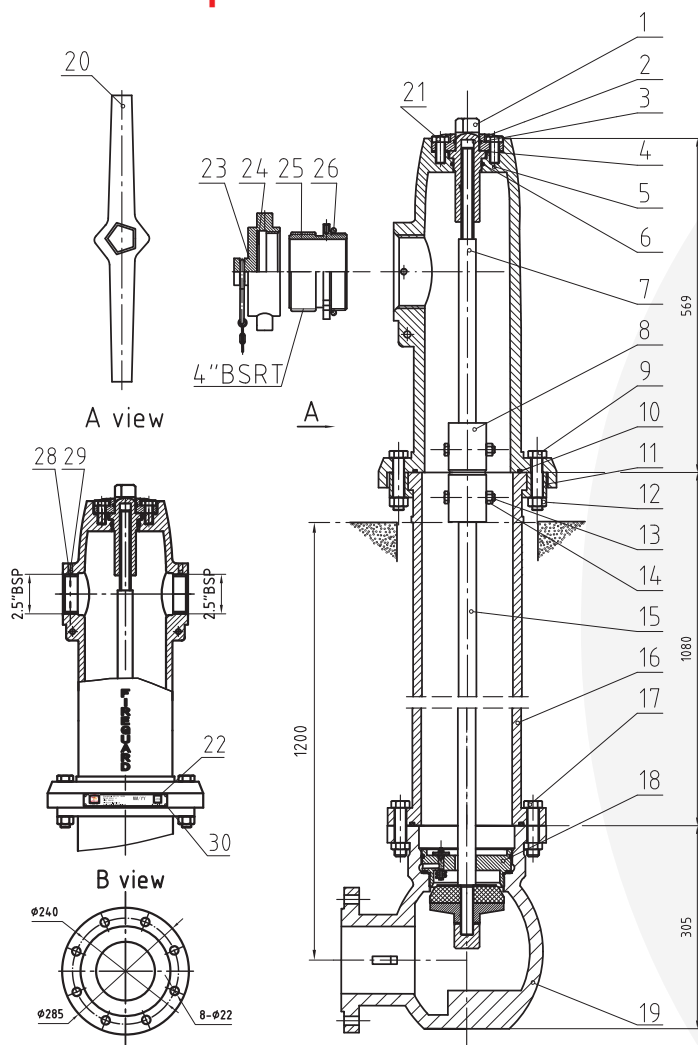
DRY BARREL PILLAR HYDRANT

PRODUCT OVERVIEW

FIREGUARD Dry Barrel Hydrant has been LPCB Approved and is designed as per international standards. Our Hydrant confirms to BS EN 14384: 2005, BS 1074-1, BS 1074-2 & BS 1074-6 Standards. The hydrant has a Break away design to prevent accidents to the hydrant, where only the upper part of the flange would be broken upon impact, when broken it is still able to maintain the seal and there is no leakage of water. Automatic drain system drains the water in the upper part when the main valve is closed, thus avoiding damage caused by freezing.



Technical Specification



FIREGUARD GLOBAL LTD.

Tel: 00-44-8450751042 • Fax: 00-44-8459751043

Email: Info@Fireguard-Uk.com • www.fireguard-Uk.com

Unit 11 • Chancel Industrial Estate • Newhall Street
Willenhall • WV13 1NX • United Kingdom



FS546607



DRY BARREL PILLAR HYDRANT



www.fireguard-Uk.com

Technical Requirements:

1. Hydrant according to BS EN14384: 2005 standard to design, manufacture and testing.
2. Hydrant after assembly to avoid affecting the appearance quality is strictly prohibited bump.
3. Working pressure 16 Bar, test pressure 24 Bar.
4. Upper body inside and outside surface with red color plastic powder coating, barrel and lower body inside and outside surface with black color plastic powder coating.
5. Fire hydrant in the closed state, the drain should be unimpeded.
6. When assembly the flange with 4" outlet in the same direction.

NO.	PART NO.	PART NAME	QTY	MATERIAL
1	FT16-083L4-119	PENTAGONAL OPERATING NUT	1	C84400
2	FT16-083S-19	TOP COVER	1	QT450-10
3	FT16-083-10B	O RING	1	NBR
4	FT16-083-36	TOP COVER SHEET	1	STEEL-PAPER PLATE
5	FT16-083S-01	UPPER BODY	1	QT450-10
6	FT16-083-10C	O RING	1	NBR
7	FT16-083F3-92	UPPER STEM	1	35# STEEL
8	FT16-083L-59	STEM COUPLING	1	QT450-10
9	FT16-082-100D	SCREW	8	20#
10	FT16-083-37B	SEAL	2	NBR
11	FT16-082E-46	CLAW	8	QT450-10
12	FT16-082-34A	NUT	16	20#
13	FT16-082E-100	SCREW	2	STS304
14	FT16-082E-34 A	NUT	2	STS304
15	FT16-083S-92A-00	LOWER STEM ASSEMBLY	1	
16	FT16-083C5-89	BARREL	1	QT450-10
17	FT16-082-100 A	SCREW	8	20#
18	FT16-083S-39-00	BRASS NIPPLE ASSEMBLY	1	
19	FT16-083L-01A1	LOWER BODY	1	QT450-10
20	FT16-083-44	HANDLE	1	QT450-10
21	FT16-083-100C	SCREW	4	20#
22	FT16-083S-125	LABEL	1	A16061
23	FT16-046-19	CAP	1	HT250
24	FT16-046-37	SEAL	1	NBR
25	FT16-047-35B	CONNECTOR	1	ZCuZn40Pb2
26	FT16-082N-10	SEAL	1	NBR
27	FT16-083J-09 A	CHAIN ASSEMBLY	3	304+H62
28	KX06-200A-00F	VALVE ASSEMBLY	2	
29	FT16-083L-62	SCREW	3	STS304
30	FT16-083L-62A	SCREW	3	STS304
31	FT16-082S-100A	SCREW	6	T6
32	FT16-045-10 A	O-RING	2	NBR